

ML 320



HEAVY-DUTY AND EFFICIENT MULTIPLE WATER
BOTTLE CARRIER ATTACHMENT TUBE
PERFORATION HEAD



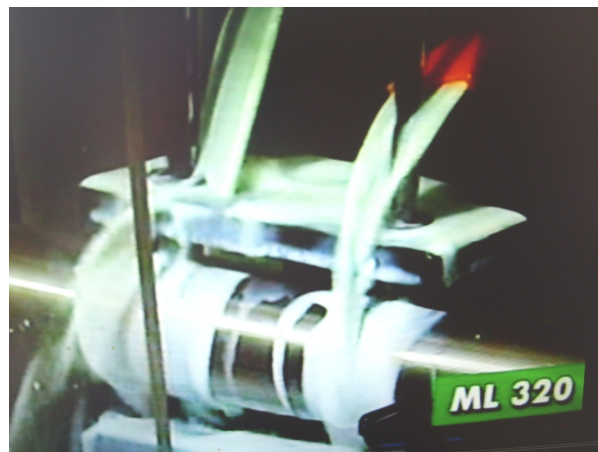
ML 320

Heavy-duty and efficient multiple water bottle carrier attachment tube perforation head.

Rapid, accurate and easy to use, the ML 319 may be fitted to the ML 102/M power machine or to similar motorized unit.

Overall dimensions : 145 x 160 x 125 (H) cm.

Weight : 3 Kg.





Bicycle Integrated Systems
24050 - Grassobbio - Bergamo - Italy
Via Matteotti, 6 -
info@marchettispa.it
www.marchettispa.it